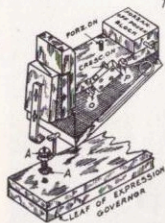


Installation of Welte Mignon (Licensee) player action installed in grand piano, in which the key bed has been cut out for action stack.

SHOWING THE EXPRESSION PNEUMATIC IN NORMAL POSITION (PIANISSIMO). THE BUTTONS A ARE USED TO REGULATE TO A DEGREE OF LOUD OR SOFT. WHEN PLAYING ON PIANISSIMO, FOR LOUD TURN TO RIGHT, FOR SOFT TURN TO LEFT. THE BEST PROCEDURE IS TO REGULATE THE PIANISSIMO BEFORE TOUCHING ANY OF THE OTHER EXPRESSIONS. IT WILL BE FOUND ON THE FIRST TEST OF THE TEST ROLL.

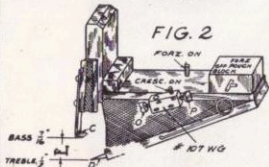
TEST # 4

FIG. 1



SHOWING THE REGULATION BETWEEN THE MEZZO FORTE HOOK C' AND CATCH D'. MEASUREMENT E SHOULD BE 7/16 FOR THE BASS SIDE AND 1/2 FOR TREBLE SIDE. THESE HOOKS ARE REGULATED BEFORE LEAVING THE FACTORY, BUT IT IS GOOD PRACTICE TO MAKE SURE BEFORE ATTEMPTING TO REGULATE THE EXPRESSIONS.

FIG. 2



SHOWING CRESCENDO TEST. THE CATCH 'L' SHOULD MOVE GRADUALLY JUST UP TO THE MEZZO FORTE HOOK 'C' IN THE SAME TIME THAT IT IS REQUIRED BY THE TEST ROLL TO TRAVEL FROM THE HOLE THAT BRINGS ON THE EXPRESSION TO THE HOLE THAT RELEASES IT. THEN REVERSE AND SLOWLY DESCEND REACHING THE BOTTOM AT THE SAME TIME AS THE NOTE IS STRUCK. THE SCREW 'P' IS USED TO REGULATE OR TIME THE UPWARD MOVEMENT. THE SCREW 'O' TO TIME THE DOWNWARD MOVEMENT. SEE TEST # 4.

FIG. 3

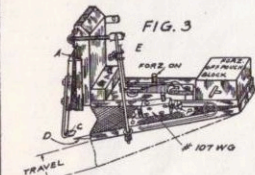


FIG. 8

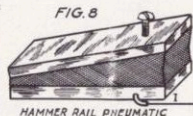
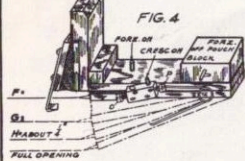
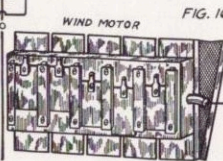


FIG. 16



SHOWING THE FORZANDO TEST. THE VOLUME OF THE FORZANDO DEPENDS ENTIRELY ON THE LENGTH OF THE EXPRESSION PERFORATIONS 5 AND 6 ON THE TEST ROLL. THERE ARE THREE DIFFERENT LENGTH PERFORATIONS. THE FIRST SET ARE SHORT AND SHOULD BE THE CATCH UP TO THE LINE H ASCENDING AND DESCENDING VERY QUICKLY. THE SECOND IS A SET OF MEDIUM SIZED PERFORATIONS WHICH SHOULD BRING THE CATCH UP TO THE MEZZO-FORTE HOOK AS SHOWN BY LINE G' ASCENDING AND DESCENDING VERY QUICKLY. THE LONGEST PERFORATION SHOULD BRING THE CATCH TO THE FULL HEIGHT AS SHOWN BY THE LINE F' ASCENDING VERY QUICKLY THIS IS REGULATED AT BLOCK 'B' (BASS) AND BLOCK 'I' (TREBLE). SEE TEST # 3 ON TEST ROLL.

NOTE: LETTERS MARKED ON LINES ARE MERELY LEADING MARKS TO FOLLOW UP TUBE CONNECTIONS.

CROSS SECTION OF REGULATING PNEUMATIC

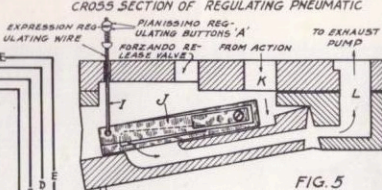


FIG. 5

SHOWING INSIDE SECTION OF GOVERNOR PNEUMATIC. KNIFE VALVE 'J' CONNECTED TO WIRE 'I' AND BUTTONS 'H' AS SHOWN IN FIG. 1. THIS VALVE CAN BE REGULATED UP OR DOWN (BEFORE TOUCHING OTHER EXPRESSIONS) FOR PIANISSIMO. AIR TRAVELS FROM THRU PORT 'L' AND OUT THRU PORT 'K'. COIL SPRING 'M' HAS BEEN TESTED, GAGED AND REGULATED BEFORE BEING INSTALLED IN ACTION AND THE TENSION OF THIS SPRING SHOULD NOT BE CHANGED IN ANY WAY.

SECTION THRU DOUBLE FUNCTION VALVE UNITS

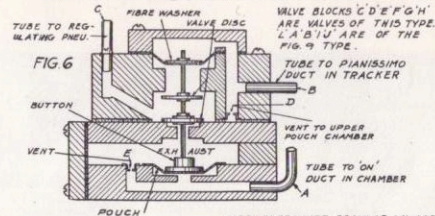
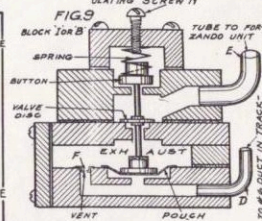


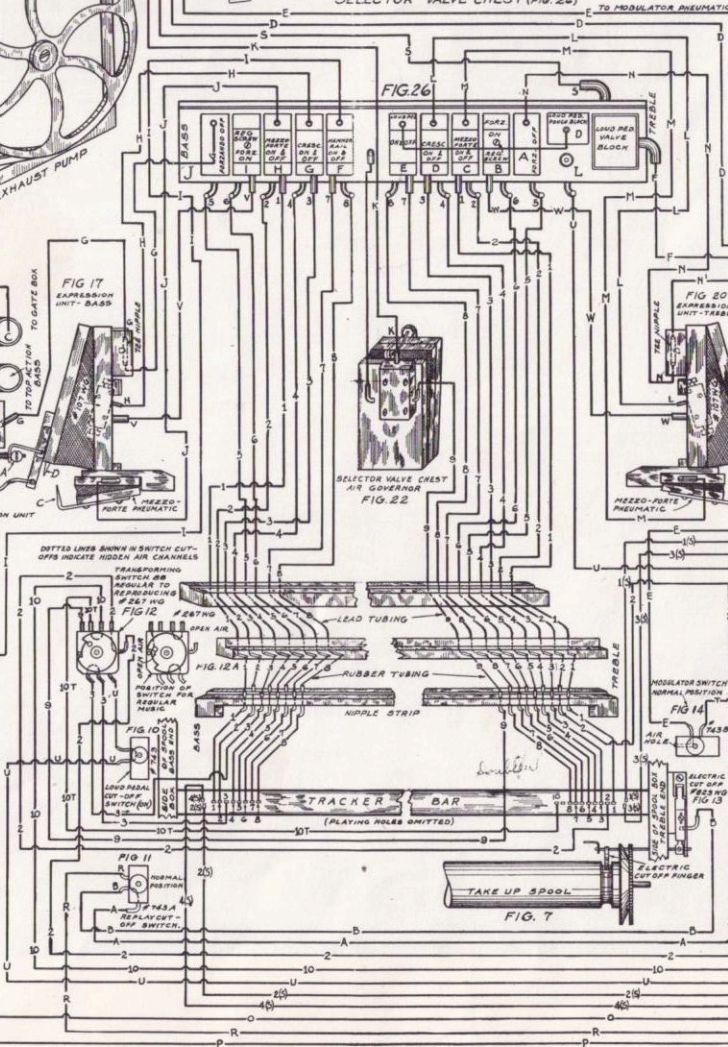
FIG. 6

FIG. 9



SELECTOR VALVE CHEST (FIG. 26)

FIG. 26



INDEX TO TRACKER, REGULAR MUSIC

1	REROLL	TREBLE
2	LOUD PEDAL	BASS

NO. 2 TREBLE & NO. 3 BASS ARE THE ONLY EXPRESSION HOLES USED IN TRACKER BAR WHEN PLAYING REGULAR MUSIC.

INDEX TO TRACKER

A	FORZANDO OFF	TREBLE SIDE
B	MEZZO FORTE ON AND OFF	TREBLE SIDE
C	CRESCENDO ON AND OFF	TREBLE SIDE
D	CRESCENDO ON AND OFF	TREBLE SIDE
E	MEZZO-FORTE ON AND OFF	TREBLE SIDE
F	FORZANDO ON	TREBLE SIDE
G	FORZANDO OFF	TREBLE SIDE

INDEX TO TRACKER (WELTE)

1	MEZZO-FORTE OFF BASS & TREBLE	
2	MEZZO-FORTE ON BASS & TREBLE	
3	CRESCENDO OFF BASS & TREBLE	
4	CRESCENDO ON BASS & TREBLE	
5	FORZANDO OFF BASS & TREBLE	
6	FORZANDO ON BASS & TREBLE	
7	LOUD PEDAL OFF TREBLE	
8	LOUD PEDAL ON TREBLE	
9	LOUD PEDAL ON BASS	
10	HAMMER RAIL ON BASS	
11	REROLL	TREBLE

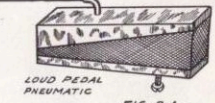


FIG. 8 A

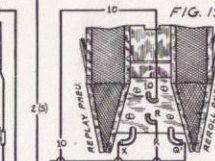
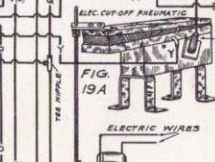


FIG. 19



MOTOR GOVERNOR FIG. 18

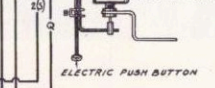
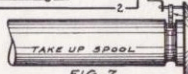


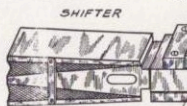
FIG. 19 A

ELECTRIC PUNCH BUTTON

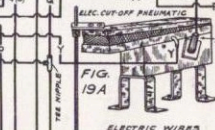
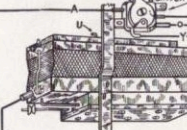
FIG. 7



SHIFTER



MOTOR GOVERNOR



ELECTRIC PUNCH BUTTON