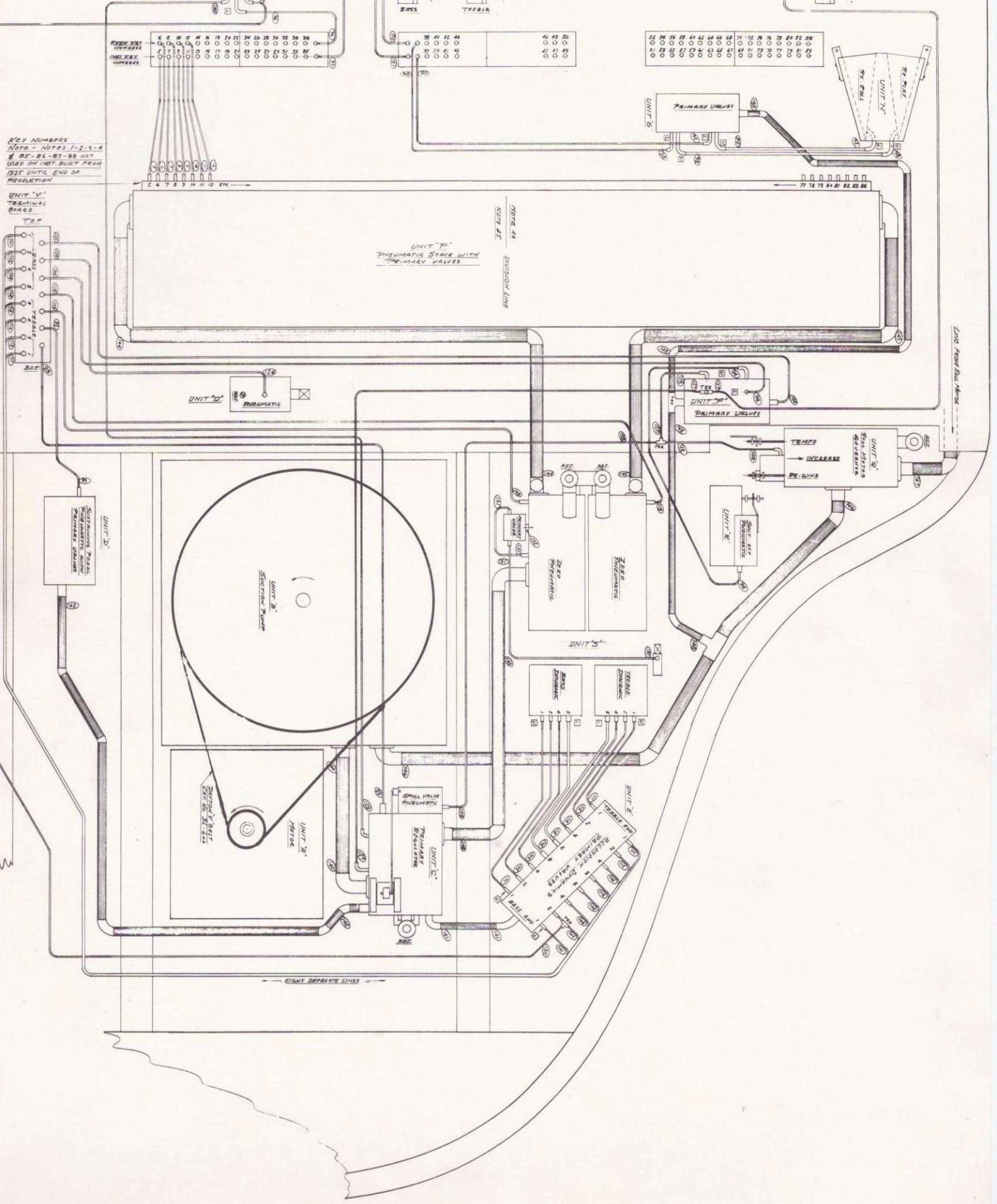


NORMAL - BOTH CLOSED  
SOFT-UNIT 'L' OPEN  
SOFT-UNIT 'M' OPEN

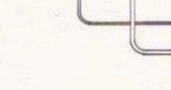
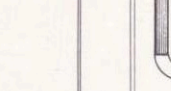
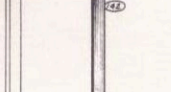
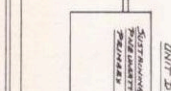
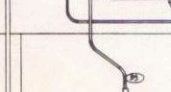
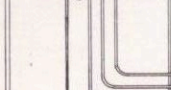
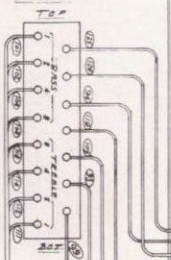
THEME GRADUATION  
BOTH NORMALLY CLOSED

Opp. BY R.R. BALL COUSE  
CLOSED ON PLAY  
OPEN ON RE-ROLL



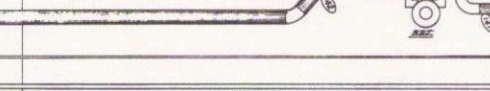
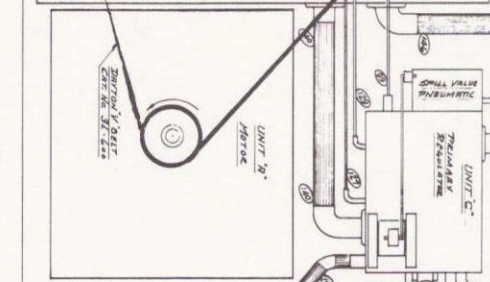
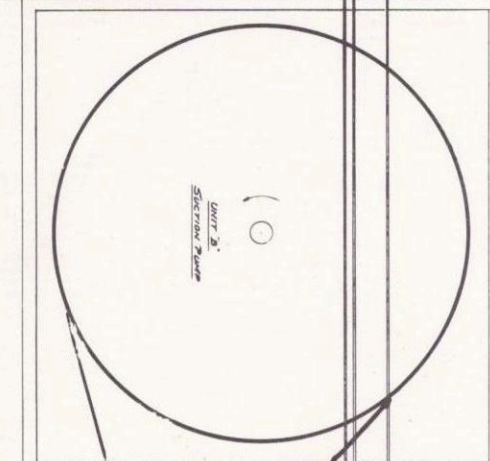
KEY NUMBERS  
NOTE - NOTES 1-2-3-4  
# 85-86-87-88 NOT  
USED ON INST. BUILT FROM  
DIS. UNTIL END OF  
PRODUCTION

UNIT 'V'  
TERMINAL  
BOARD



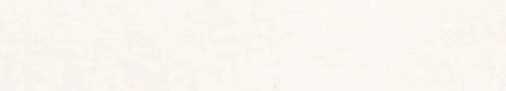
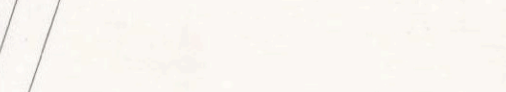
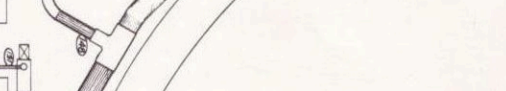
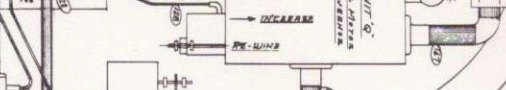
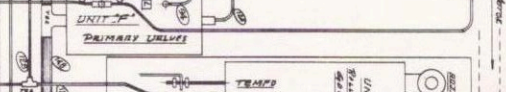
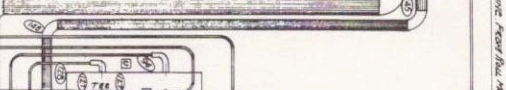
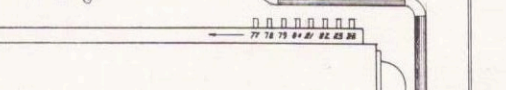
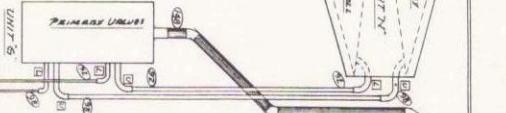
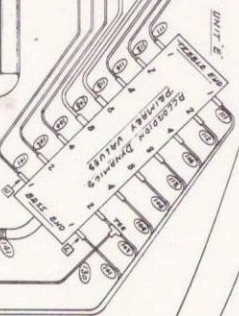
UNIT 'D'  
PNEUMATIC STACK WITH  
TRIMMING VALVES

NOTE 44  
NOTE 45  
DIVISION LINE



40	41	42	43	44	45
00	00	00	00	00	00
40	41	42	43	44	45
00	00	00	00	00	00

50	51	52	53	54	55
00	00	00	00	00	00
50	51	52	53	54	55
00	00	00	00	00	00



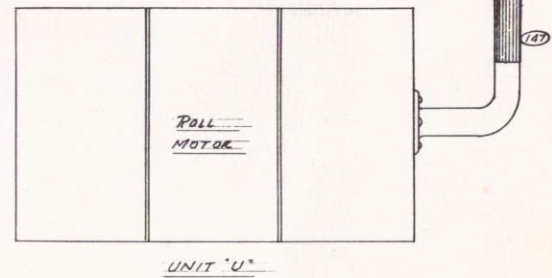
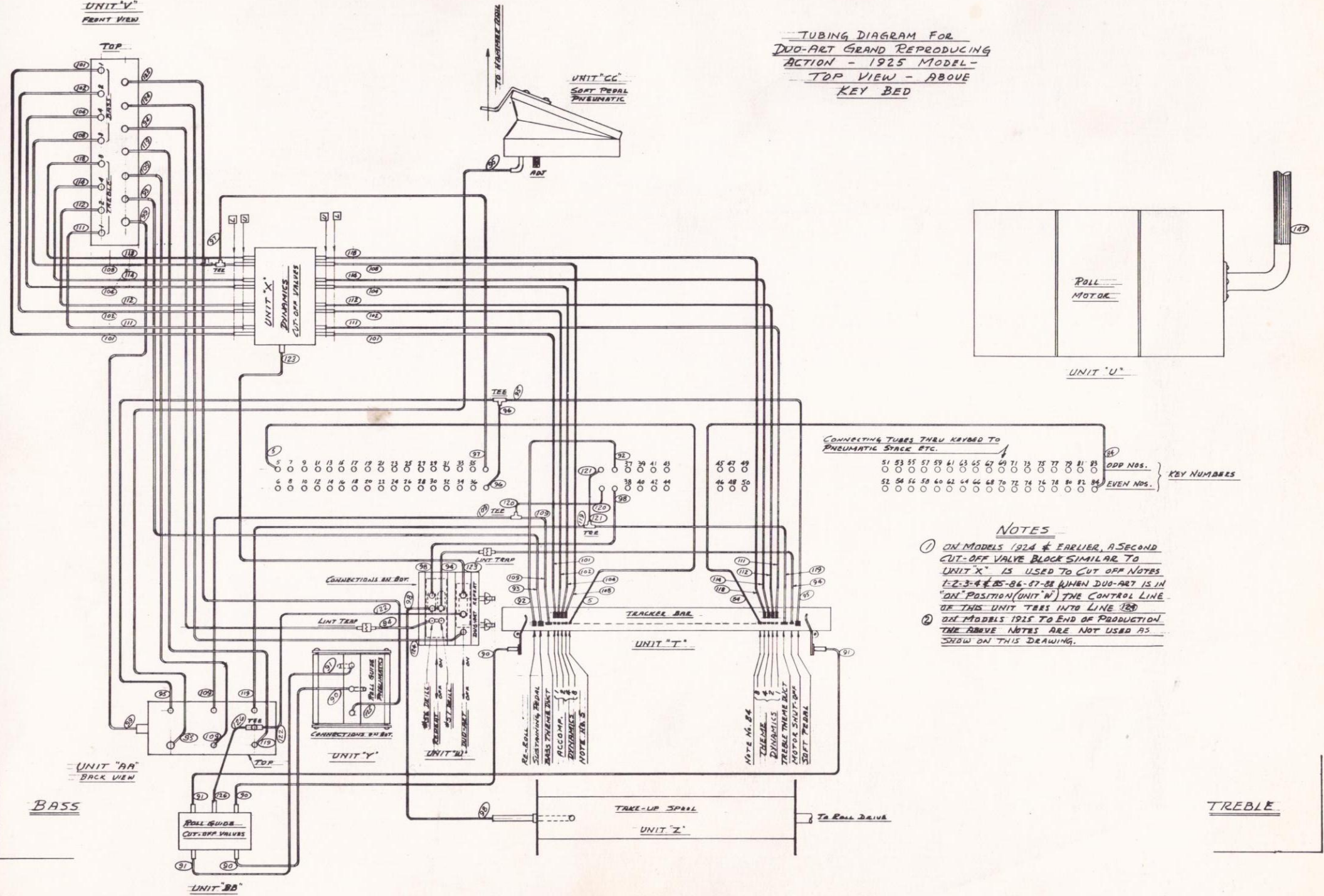
EIGHT SEPARATE LINES

LIVE FROM BALL COUSE



UNIT "V"  
FRONT VIEW

TUBING DIAGRAM FOR  
DUO-ART GRAND REPRODUCING  
ACTION - 1925 MODEL -  
TOP VIEW - ABOVE  
KEY BED



CONNECTING TUBES THRU KEYBED TO PNEUMATIC STACK ETC.

51	53	55	57	59	61	63	65	67	69	71	73	75	77	79	81	83
52	54	56	58	60	62	64	66	68	70	72	74	76	78	80	82	84

KEY NUMBERS

ODD NOS. }  
EVEN NOS. }

NOTES

- ON MODELS 1924 & EARLIER, A SECOND CUT-OFF VALVE BLOCK SIMILAR TO UNIT "X" IS USED TO CUT OFF NOTES 1-2-3-4-85-86-87-88 WHEN DUO-ART IS IN "ON" POSITION (UNIT "N") THE CONTROL LINE OF THIS UNIT TIES INTO LINE 120
- ON MODELS 1925 TO END OF PRODUCTION THE ABOVE NOTES ARE NOT USED AS SHOWN ON THIS DRAWING.

UNIT "AA"  
BACK VIEW

BASS

UNIT "BB"

UNIT "Y"

UNIT "W"

UNIT "T"

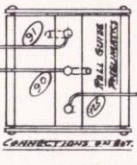
UNIT "Z"

UNIT "CC"  
SOFT PEDAL  
PNEUMATIC

TREBLE

RE-ROLL  
SUBSTITUTION PEDAL  
BASS TREBLE SHUT  
ACCO. MP.  
DYNAMICS  
NOTE NO. 5

NOTE NO. 84  
TREBLE  
DYNAMICS  
TREBLE TREBLE SHUT  
MOTOR SHUT-OFF  
SOFT PEDAL



CONNECTIONS IN BKT.

CONNECTIONS IN BKT.

TRACKER BAR

LINT TRIP

LINT TRIP

LINT TRIP

SOFT PEDAL

SOFT PEDAL

SOFT PEDAL

SOFT PEDAL

SOFT PEDAL

SOFT PEDAL